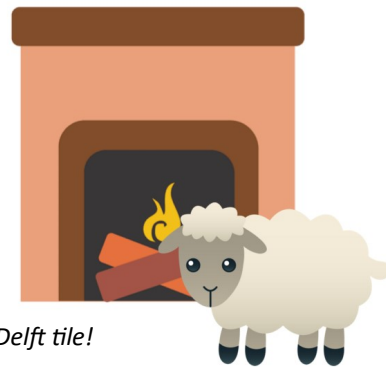


The Parlor Room

The room across the hall from the Visitor Center is the Parlor Room. This room was like a living room for the Dyckman family-- they would use this room for spending time together, reading, writing, and even telling stories! On the fireplace you can see lots of tiny pictures that could be used for telling stories from the Bible.



Help Luna color in the Delft tile!

(Then see if you can find this tile on the fireplace!)



The Kitchen

Down the stairs at the end of the hall you'll find the kitchen!

This is the winter kitchen because in the winter the fire would help to heat the house. Since the Dyckmans were farmers almost everything they ate had to come from their farm. If you look around the fireplace you can see some of the food they might have been cooking!

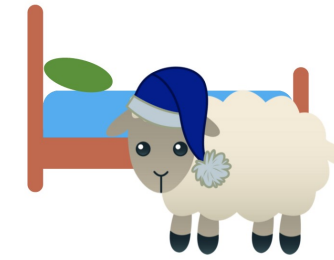


Help Luna Learn about the Dyckman's by circling the foods they would have eaten!



Answers: The Dyckman's would have eaten bread, corn, chicken, pie, oysters, and soup!

The Bedroom Floor



Help Luna complete the word search so she can learn all about the Dyckman family and their home!

The very top floor used to be one giant bedroom for everyone in the house! Today you can see a smaller bedroom and a study that has lots of cool artifacts from the Dyckman's farm and the Native Americans who lived here as well!

Wordsearch

I S T S S T Y C D C C P O K U
 X V Y S W V Y L G A Y A C D E
 A R R O W H E A D N V R A U H
 D D Z V F S H X B D L L N T O
 Y D G U I C J A E L U O N C R
 C N A F R M H L D E N R O H S
 K Q R X E M C Q R B A L N H E
 M F D X P G J B O M Y F N I S
 A J E L L U B Z O L Y G L N H
 N A N W A W D E M X W S W W O
 G N K J C P K I T C H E N O E
 H L F C E X B C R P H F A O D
 V W I L L I A M T P P A H D L
 I U U J P B A M J E X R I F R
 N G O Y Q I G Q L Q Q M G P D

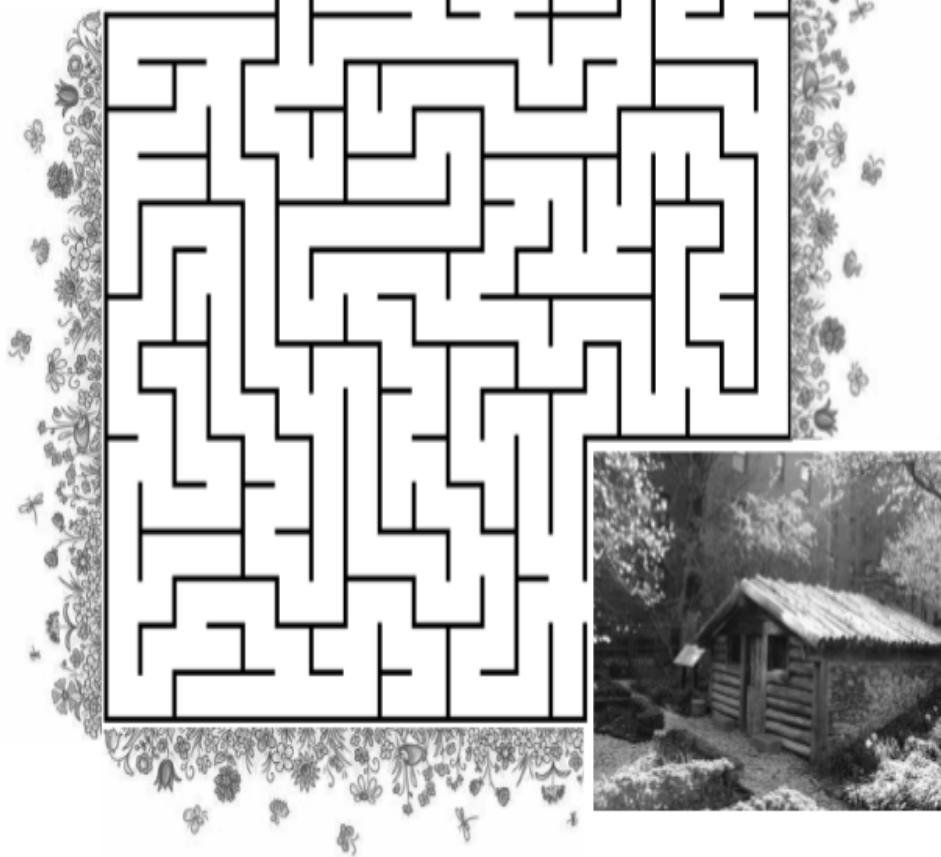
FIREPLACE LUNA CANNON INWOOD ARROWHEAD
 KITCHEN HORSESHOE DUTCH PARLOR DYCKMAN
 GARDEN BEDROOM WILLIAM FARM CANDLE JAN

The Garden

Behind the farmhouse you'll see the garden and a Hessian hut. Soldiers used to live in huts like this one during the Revolutionary War!



Help Luna travel through the maze to find the Hessian hut!



ADDRESS

Dyckman Farmhouse Museum Alliance
4881 Broadway (at 204th Street) New York, NY 10034

TRANSPORTATION

Subway: A or 1 train to 207th Street
Bus: BX7 to 204th Street & Broadway or the M100 to Dyckman Street

CONTACT US

Email: info@dyckmanfarmhouse.org
Telephone: 212-304-9422
Fax: 212-304-0635

FOLLOW US

Web: dyckmanfarmhouse.org
AmazonSmile: Dyckman Farmhouse Museum



@DyckmanFarmhouseMuseum



@DyckmanFarm



@DyckmanFarmhouse



Find out where Luna will go next!

Welcome to the Dyckman Farmhouse!

